



Meet Lauren Williams - Corporate Services Team

We are delighted to introduce you to the heart and soul of our Corporate Service Team, Lauren. Along with her twelve years of blissful marriage and three wonderful children, she brings a touch of warmth and dedication to our team. Beyond her cherished family moments, Lauren seamlessly takes charge of the administrative duties here at the Chamber, demonstrating commitment while ensuring the smooth functioning of our operations. Her meticulous approach and collaborative spirit shine as she works closely with our outside accounting firm. She continues to elevate the standards of efficiency and professionalism within the Chamber.



Economy At a Glance

The US Bureau of Labor Statistics (BLS) recently released data for December 2023. The unemployment rate for the Wichita Falls MSA as of December 2023 was 3.3%. The Texas unemployment rate for December 2023 is 4.0%. We have 53,577 total workers who reside in Wichita County, earning an average weekly wage of \$942.

Chamber Happenings

Guess Who Joined The Chamber?

We express our gratitude to the following individuals and businesses who have recently joined the Chamber:

- [Dalet Holistic Health Group](#)
- [Emmalee's Shop](#)
- [Elara Caring Skilled Home Health](#)

Groundbreaking Ceremony

On behalf of Mayor Tim Short and the Board of Directors of the Wichita Falls Chamber of Commerce, you are invited to a Groundbreaking Ceremony of the new Foundation Kia store along with the celebration of the new / under construction Foundation Mercedes and Foundation Hyundai. This ceremony will be held on March 01, at 12:00 p.m., at 2543 Old Jacksboro Highway.

Ground Breaking Ceremony for:



**\$34-million-dollar investment in
their new Foundation Kia,
Foundation Mercedes and
Foundation Hyundai!**

Featured Chamber Events



State of the Economy

The Wichita Falls Chamber's State of the Economy will be a gathering of National, State, and Local Economic Experts for the purpose of discussing the current state of affairs. The event will take place on March 19, 2024, from 10:00 a.m. to 1:00 p.m. at Sikes Lake Center. Interested in being a sponsor for this event? Contact Jon or Sara at 940.723.2741 or click the [link](#) to buy your tickets today!

DEFINING OUR CULTURE

April 10-11, 2024



Defining Our Culture

Who are we as a community and how do we create a vibrant culture that curates the future? Join us for Defining Our Culture on April 10 and 11 from 8:00 a.m. to 5:00 p.m. and be a part of this community-changing movement.

This event is designed to create a dynamic and inclusive platform where individuals and organizations such as the Wichita Falls Chamber of Commerce, Midwestern State University, Texas

Tech University System, Sheppard Air Force Base, and the City of Wichita Falls can come together to explore, articulate, and prioritize values that promote unity, growth, and prosperity in Wichita Falls. Click [here](#) to register for this event!

What's Happening This Week

Monday February 26,

- [Medical Monday 25% OFF](#): At Frank & Joe's, starting at 6:00 a.m.
- [Playing the Greens-WFFMA Tournament](#): At Next Level Golf, starting at 9:00 a.m. to 9:00 p.m.

Tuesday February 27,

- [Texoma Women's Business Council Networking](#): At Next Level Golf, starting at 12:00 p.m.
- [Town Hall Forum with James Frank](#): At Vernon College Osborne Administration Building Auditorium, starting at 4:00 p.m.

Wednesday February 28,

- [February Homeschool Art](#): At CrashWorks STEAM Studio & Makerspace, starting at 1:00 p.m. to 2:30 p.m.

Thursday February 29,

- [24th Annual Book Fair](#): At the MPEC for the Wichita Adult Literacy Council, starting at 5:00 p.m. to 8:00 p.m.
- [Town Hall Forum with James Frank & Senator Charles Perry](#): At the Wichita Falls Museum of Art at Midwestern State University, starting at 2:00 p.m.

Friday March 1,

- [Texas Conference for Employers](#): At Worforce Solutions North Texas, starting at 8:00 a.m. to 5:00 p.m.

- [Between the Lines Book Club](#): At the Wichita Falls Library, starting at 10:15 a.m. to 11:45 a.m.

Saturday March 2,

- [Fiddle Leaf Workshop](#): At the Wichita Falls Brewing Company, starting at 5:00 p.m. to 6:00 p.m.
- [Art Lab Studio Saturday](#): At the Kemp Center for the Arts, starting at 10:00 a.m. to 12:00 p.m.

Sunday March 3,

- [Sunday Brunch](#): At Horseshoe Bend Cellars, starting at 12:00 p.m. to 3:00 p.m.

What's Happening Next Week?

Monday March 4,

- [Thomas Fowler Monthly Membership Meeting](#): At American Legion Post #169, starting at 6:00 p.m.
- [Tommy Finley and Rusty Nails](#): At the Silver Strings Entertainment Center Country Ballroom, starting at 7:00 p.m.

Tuesday March 5,

- [Nature Preschool](#): At River Bend Nature Center, starting at 2:00 p.m.
- [The Side Quest Sci-Fi/Fantasy Book Club](#): At the Wichita Falls Public Library, starting at 6:00 p.m. to 7:30 p.m.

Wednesday March 6,

- [Community Champions Day](#): At the Meals on Wheels Center, starting at 10:00 a.m.

Thursday, March 7,

- [Mommy & Me – Famous Artists; Picasso](#): At CrashWorks STEAM Studio & Marketplace, starting at 10:00 a.m. to 11:00 a.m.
- [Boy Scouts of America Roundtable](#): At Northwest Texas Council, starting at 6:30 p.m.

Friday, March 8,

- [Disney's Mary Poppins](#): At the Wichita Theatre, starting at 7:30 p.m. to 10:00 p.m.
- [Survivor Spring Break](#): At Yogi Bear's Jellystone Park Camp-Resort, starting at 4:00 p.m.

Saturday March 9,

- [Watercolor Easter Cards](#): At 9th Street Studios with Gingersnap arts, starting at 10:30 a.m.
- [Strange Lucy and Hellen Bach](#): At Legends Roadhouse, starting at 8:30 p.m.

Sunday March 10,

- [Meet Jason White](#): At Apache Casino Hotel, starting at 11:00 a.m. to 12:00 p.m.

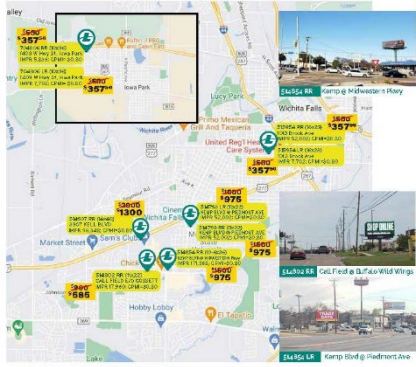
Interested In Billboard Advertising?

Wichita Falls Digital Billboards

MEGA DEAL!
35% OFF
Limited Time Only

**WHEN YOU PICK
PICK 3
OR MORE DIGITAL
BILLBOARDS!**

All rates listed are net and per four weeks.

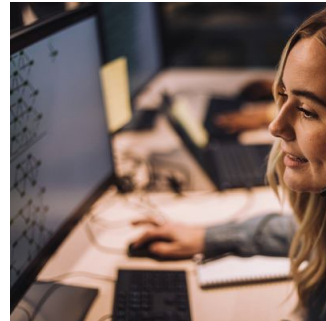


Entrepreneur

4 Reasons Why Your Customer Service Is About to Get a Whole Lot Better in 2024

As the technology powering AI customer support jumps to the next level, the quality of service will greatly improve.

[Read more](#)



Entrepreneur

Why Startups Should Invest in Public Relations Right Now

Should you wait until you fundraise to invest in PR? The short answer is a resounding no. Here's why.

[Read more](#)



Entrepreneur

The 4 Pros and Cons of Being a Part-Time CEO

The idea of a part-time CEO is gaining traction. But before you make the switch, here are some pros and cons to consider.

[Read more](#)

